

**MAR 27 - APR 02, 2023**

The Queens luxury real estate market, defined as all properties priced \$1M and above, saw 16 contracts signed this week, made up of 3 condos, and 13 houses. The previous week saw 25 deals. For more information or data, please reach out to a Compass agent.

<b>\$1,588,137</b>	<b>\$1,444,444</b>	<b>\$785</b>
Average Asking Price	Median Asking Price	Average PPSF
<b>6%</b>	<b>\$25,410,179</b>	<b>122</b>
Average Discount	Total Volume	Average Days On Market

14-41 159th Street in Beechhurst entered contract this week, with a last asking price of \$3,148,000. Originally built in 1935, this house spans 4,112 square feet with 5 beds and 5 full baths. It features a chef's kitchen with quartzite countertops and high-end appliances, a family room with a wood-burning fireplace, radiant floor heating throughout, durable engineered hardwood floors, a backyard with heated in-ground pool, a 3-car garage, a central vacuum system, and much more.

Also signed this week was 160-11 29th Avenue in Flushing, with a last asking price of \$2,280,000. Originally built in 1950, this single-family home spans approximately 3,100 square feet with 5 beds and 6 full baths. It features solar panels, an eat-in kitchen with a large island, a family room with an electric fireplace, a large balcony, a large backyard with brick pavers, a finished basement with separate entrance, and much more.

<b>3</b>	<b>0</b>	<b>13</b>
Condo Deal(s)	Co-op Deal(s)	Townhouse Deal(s)
<b>\$1,464,597</b>	<b>\$0</b>	<b>\$1,616,646</b>
Average Asking Price	Average Asking Price	Average Asking Price
<b>\$1,540,791</b>	<b>\$0</b>	<b>\$1,400,000</b>
Median Asking Price	Median Asking Price	Median Asking Price
<b>\$1,396</b>	<b>N/A</b>	<b>\$618</b>
Average PPSF	Average PPSF	Average PPSF
<b>1,075</b>	<b>N/A</b>	<b>2,756</b>
Average SqFt	Average SqFt	Average SqFt

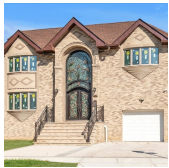


### 14-41 159TH ST

<b>Type</b>	Townhouse	<b>Status</b>	Contract
<b>SqFt</b>	4,112	<b>Beds</b>	5
<b>PPSF</b>	\$766	<b>Fees</b>	\$1,953

### Beechhurst

<b>Ask</b>	\$3,148,000
<b>Baths</b>	5.5
<b>DOM</b>	170

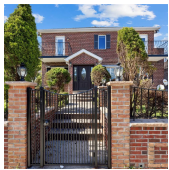


### 160-11 29TH AVE

<b>Type</b>	Townhouse	<b>Status</b>	Contract
<b>SqFt</b>	3,100	<b>Beds</b>	5
<b>PPSF</b>	\$735	<b>Fees</b>	\$895

### Flushing

<b>Ask</b>	\$2,280,000
<b>Baths</b>	6.5
<b>DOM</b>	170

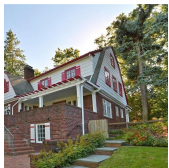


### 193-03 45TH AVE

<b>Type</b>	Townhouse	<b>Status</b>	Contract
<b>SqFt</b>	2,025	<b>Beds</b>	5
<b>PPSF</b>	\$883	<b>Fees</b>	\$914

### Flushing

<b>Ask</b>	\$1,789,000
<b>Baths</b>	7
<b>DOM</b>	239

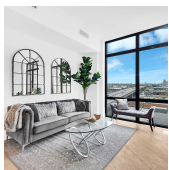


### 19 240TH ST

<b>Type</b>	Townhouse	<b>Status</b>	Contract
<b>SqFt</b>	3,183	<b>Beds</b>	5
<b>PPSF</b>	\$503	<b>Fees</b>	\$1,234

### Douglaston

<b>Ask</b>	\$1,600,000
<b>Baths</b>	3.5
<b>DOM</b>	43



### 10-64 JACKSON AVE #2A

<b>Type</b>	Condo	<b>Status</b>	Contract
<b>SqFt</b>	1,360	<b>Beds</b>	3
<b>PPSF</b>	\$1,139	<b>Fees</b>	\$2,570

### Hunters Point

<b>Ask</b>	\$1,548,000
<b>Baths</b>	2
<b>DOM</b>	438



### 3 COURT SQUARE #3403

<b>Type</b>	Condo	<b>Status</b>	Temp Off
<b>SqFt</b>	992	<b>Beds</b>	2
<b>PPSF</b>	\$1,554	<b>Fees</b>	\$2,178

### Hunters Point

<b>Ask</b>	\$1,540,791
<b>Baths</b>	2
<b>DOM</b>	34

Compass is a licensed real estate broker and abides by Equal Housing Opportunity laws. All material presented herein is intended for informational purposes only. Information is compiled from sources deemed reliable but is subject to errors, omissions, changes in price, condition, sale, or withdrawal without notice. No statement is made as to the accuracy of any description. All measurements and square footages are approximate. This is not intended to solicit property already listed. Nothing herein shall be construed as legal, accounting or other professional advice outside the realm of real estate brokerage.



### 61-43 170TH ST

<b>Type</b>	Townhouse	<b>Status</b>	Contract
<b>Sqft</b>	3,139	<b>Beds</b>	7
<b>PPSF</b>	\$478	<b>Fees</b>	\$1,137

### Flushing Heights

<b>Ask</b>	\$1,500,000
<b>Baths</b>	5.5
<b>DOM</b>	27

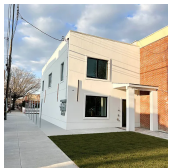


### 216-17 17TH AVE

<b>Type</b>	Townhouse	<b>Status</b>	Contract
<b>Sqft</b>	3,275	<b>Beds</b>	7
<b>PPSF</b>	\$455	<b>Fees</b>	\$1,178

### Bay Terrace

<b>Ask</b>	\$1,488,888
<b>Baths</b>	4.5
<b>DOM</b>	58

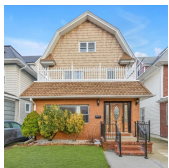


### 25-20 23RD AVE

<b>Type</b>	Townhouse	<b>Status</b>	Contract
<b>Sqft</b>	2,000	<b>Beds</b>	4
<b>PPSF</b>	\$700	<b>Fees</b>	\$655

### Astoria

<b>Ask</b>	\$1,400,000
<b>Baths</b>	3
<b>DOM</b>	N/A



### 42-37 165TH ST

<b>Type</b>	Townhouse	<b>Status</b>	Contract
<b>Sqft</b>	2,364	<b>Beds</b>	6
<b>PPSF</b>	\$571	<b>Fees</b>	\$756

### Flushing

<b>Ask</b>	\$1,349,000
<b>Baths</b>	4
<b>DOM</b>	113

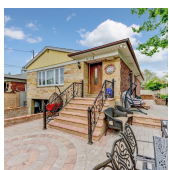


### 215-04 64TH AVE

<b>Type</b>	Townhouse	<b>Status</b>	Contract
<b>Sqft</b>	2,569	<b>Beds</b>	4
<b>PPSF</b>	\$525	<b>Fees</b>	\$1,125

### Oakland Gardens

<b>Ask</b>	\$1,348,500
<b>Baths</b>	3.5
<b>DOM</b>	8



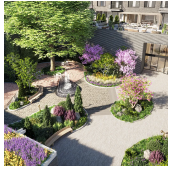
### 69-33 170TH ST

<b>Type</b>	Townhouse	<b>Status</b>	Contract
<b>Sqft</b>	2,744	<b>Beds</b>	5
<b>PPSF</b>	\$488	<b>Fees</b>	\$681

### Flushing Heights

<b>Ask</b>	\$1,338,000
<b>Baths</b>	3
<b>DOM</b>	133

Compass is a licensed real estate broker and abides by Equal Housing Opportunity laws. All material presented herein is intended for informational purposes only. Information is compiled from sources deemed reliable but is subject to errors, omissions, changes in price, condition, sale, or withdrawal without notice. No statement is made as to the accuracy of any description. All measurements and square footages are approximate. This is not intended to solicit property already listed. Nothing herein shall be construed as legal, accounting or other professional advice outside the realm of real estate brokerage.



### 45-30 PEARSON ST #4D

Hunters Point

Type	Condo	Status	Contract
Sqft	873	Beds	2
PPSF	\$1,495	Fees	\$1,489

Ask	\$1,305,000
Baths	2
DOM	146



### 148-50 BROOKVILLE BLVD

Rosedale

Type	Townhouse	Status	Contract
Sqft	N/A	Beds	6
PPSF	N/A	Fees	\$504

Ask	\$1,275,000
Baths	5
DOM	53



### 1337 VIRGINIA ST

Far Rockaway

Type	Townhouse	Status	Contract
Sqft	N/A	Beds	4
PPSF	N/A	Fees	\$554

Ask	\$1,250,000
Baths	3.5
DOM	30



### 112-36 38TH AVE

North Corona

Type	Townhouse	Status	Contract
Sqft	1,800	Beds	8
PPSF	\$694	Fees	\$486

Ask	\$1,250,000
Baths	2
DOM	157

Compass is a licensed real estate broker and abides by Equal Housing Opportunity laws. All material presented herein is intended for informational purposes only. Information is compiled from sources deemed reliable but is subject to errors, omissions, changes in price, condition, sale, or withdrawal without notice. No statement is made as to the accuracy of any description. All measurements and square footages are approximate. This is not intended to solicit property already listed. Nothing herein shall be construed as legal, accounting or other professional advice outside the realm of real estate brokerage.